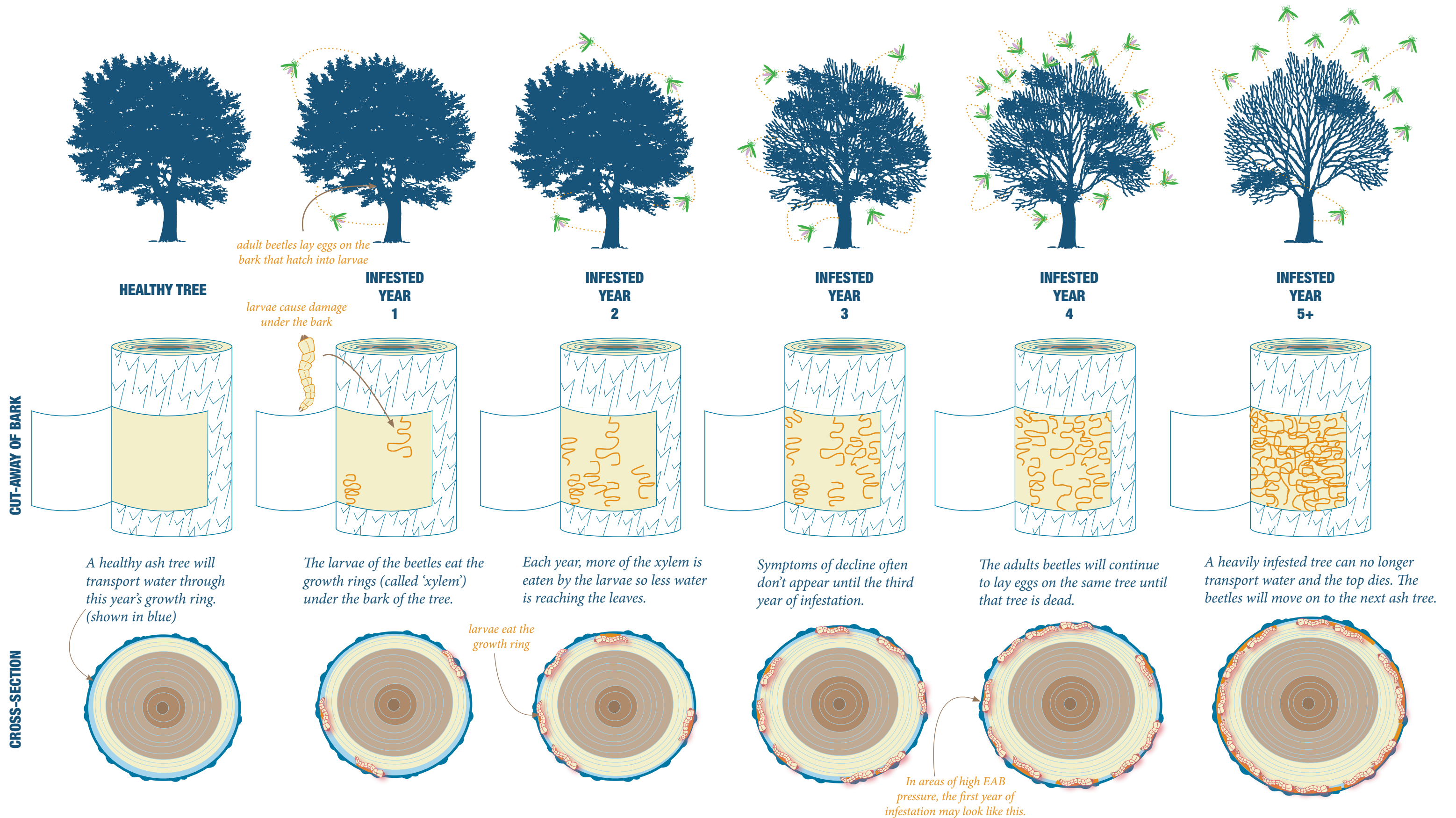


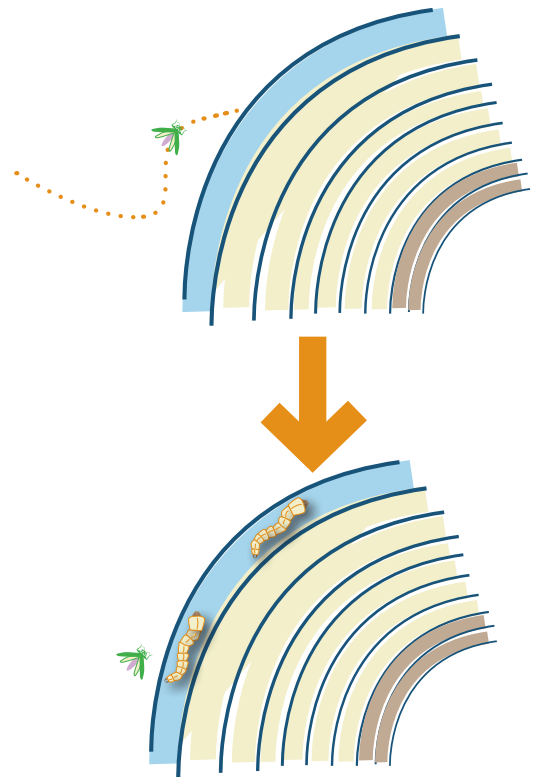
HOW EMERALD ASH BORER KILLS AN ASH TREE:





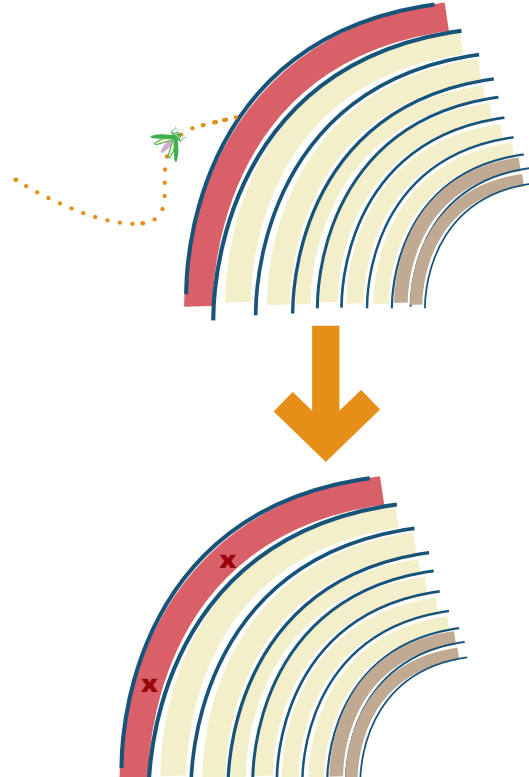
HOW TREATMENTS PROTECT AN ASH TREE:

UNTREATED ASH TREE



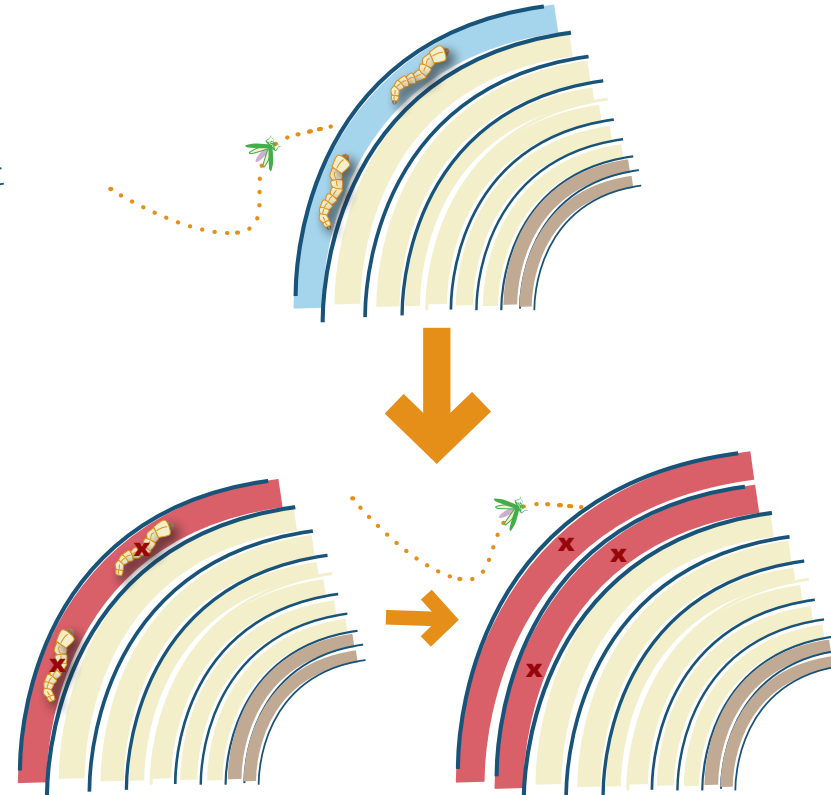
When a beetle lays eggs on an unprotected tree, the larvae begin to eat the tree's growth rings.

PREVENTIVE TREATMENT



When a beetle lays eggs on a protected tree, the larvae consume the treatment immediately, and die.

THERAPEUTIC TREATMENT

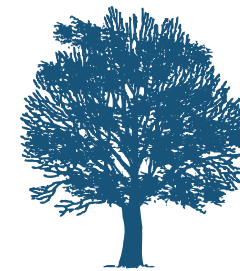


Infested trees are treated by tree injection, killing the larvae feeding on the tree.

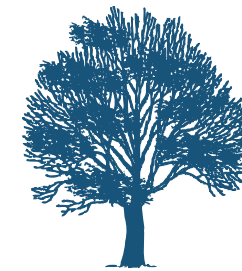
This treatment will last two seasons, protecting the tree from additional attacks.

EXPECTATIONS OF RECOVERY FOR INFESTED TREES:

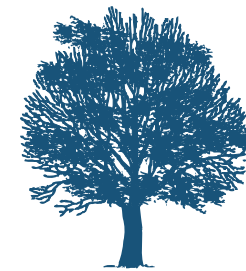
A tree showing decline from emerald ash borer may take several seasons to fully recover, and may even show more decline the year after treatment. Once the tree begins to put on healthy growth rings, the canopy will recover.



TREATMENT
YEAR
1



TREATMENT
YEAR
2



TREATMENT
YEAR
3



TREATMENT
YEAR
4

NOTE: Due to the compromised vascular system, tree injection is recommended for treating infested trees. After the tree begins to recover, soil treatments or bark spray treatments are an acceptable option.

WHEN TO TREAT AND WITH WHAT:

